



FIUGGI

June 07th - 14th 2025





- **Ambasciatori Place Hotel (Fiuggi-Italy_) - 4 stars - Super Half Board - 5 nights**

Super Half Board

includes Intercontinental breakfast from 7.30am to 10.00am sweet and savoury buffet, fresh and homemade products. Light Lunch buffet after ride, available from 1.00 pm to 4.00 pm with pasta/soup, vegetables, typical pizza bread from Fiuggi with selection of local cured meats, fruits, water, soft drink. - Dinner four courses, (beverage not included.).

- **Sabaudia Hotel (Sabaudia-Italy_) - 4 stars - Half Board - 2 nights**

Half Board

Intercontinental breakfast from 7.30am to 10.00am sweet and savoury buffet. - Dinner four courses, (beverage not included.).

Included:

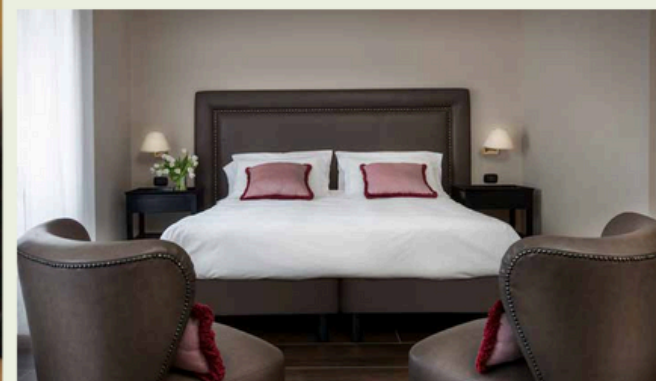
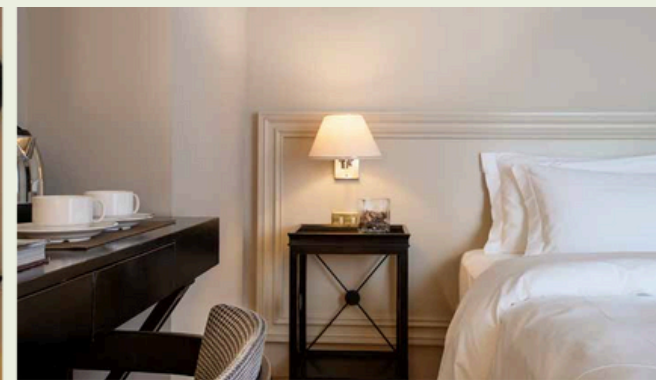
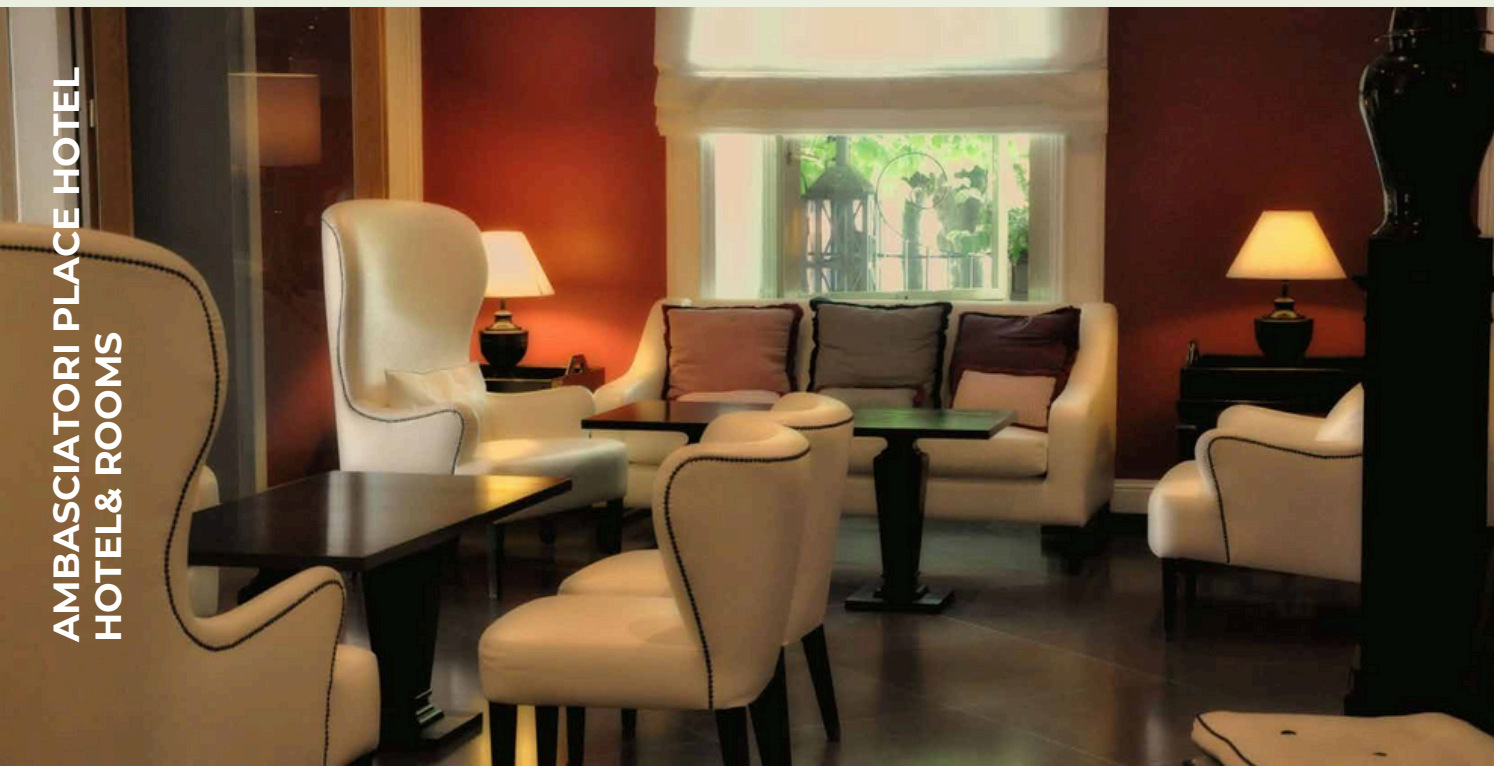
- 5 bike rides.
- 2 Bike Guides - 2 different level of rides.
- 1 Wine Tasting.
- Technical Induments Laundry Service Included.
- Minivan Transfers to/from seacoast for all luggages.
- SPA Center (Jacuzzi, Finnish Sauna, Steam Bath, comfort and relaxation area)



Not included:

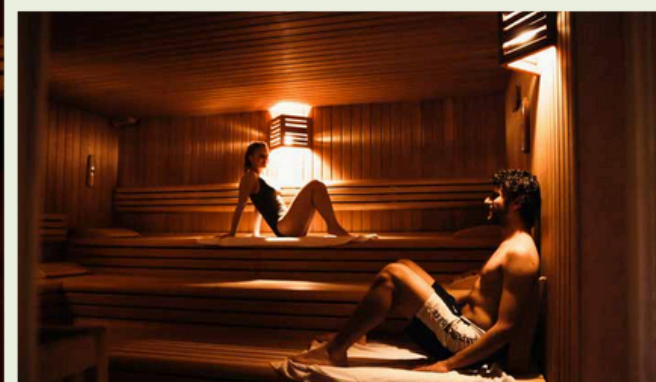
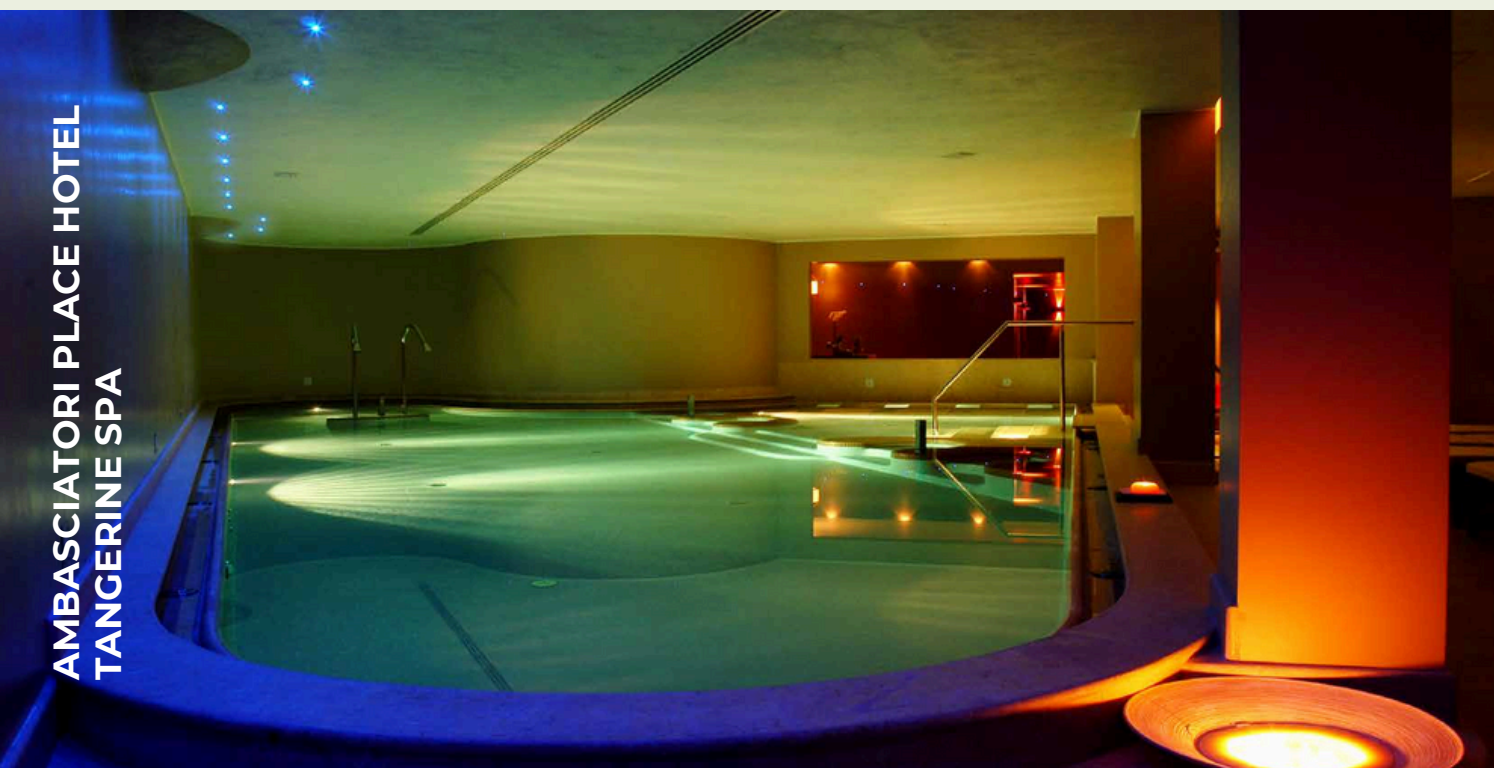
- City Taxes (Average € 4,50 per person per day)
- All drinks and extras
- Transfers from the main airports (Rome FCO - Rome CPO)
Quotation available on request.

AMBASCIATORI PLACE HOTEL
HOTEL & ROOMS



EN

AMBASCIATORI PLACE HOTEL
TANGERINE SPA



Sabaudia

HOTEL & SPA ★★★★★



Sabaudia

HOTEL & SPA ★★★★★



Packages Prices:

- 1550,00 EUR per person (Bike Rental not Included)

Standard Room with SPA Access:

Queen Size bed, flat screen tv (32"), tea kettle with a selection of teas, writing desk and chairs.

- 1850,00 EUR per person (Bike Rental not Included)

Superior Room with SPA Access:

Double Room. King Size bed, flat screen tv (32"), tea kettle with a selection of teas, writing desk, chairs, table with easy chair.

- 1350,00 EUR Single Room* (Bike Rental not Included)

*only 3 rooms available.

- 1450,00 EUR per person (No Rider)

- Bike Rental-6 days :

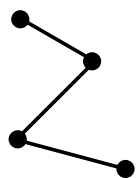
Road Bike 320,00 € Total,per bike.

E-Bike 390,00 € Total, per bike.

Bike Ride Technical Informations:

RIDE 1 - 2 Difficult Levels

FUMONE CASTLE Bike Tour



Distance: 60 km



Elevation: +1200 m

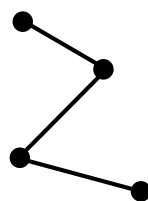
Bike Ride Technical Informations:

RIDE 2 - 2 Difficult Levels



EPIC RIDE

MONASTRY ROAD Bike Tour



Distance: 68 km

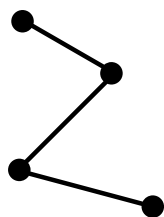


Elevation: +1400 m

Bike Ride Technical Informations:

RIDE 3 - 2 Difficult Levels

WINE TASTING Bike Tour



Distance: 55 km



Elevation: +900 m

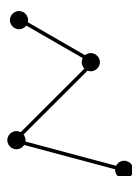
Bike Ride Technical Informations:

RIDE 4 - 2 Difficult Levels



EPIC RIDE

FROM MOUNTAINS TO SEA



Distance: 95 km



Elevation: +950 m

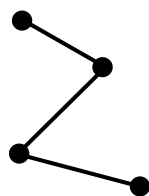
Bike Ride Technical Informations:

RIDE 5 - 2 Difficult Levels



EPIC RIDE

FROM SEA TO MOUNTAINS



Distance: 99 km



Elevation: +1140 m